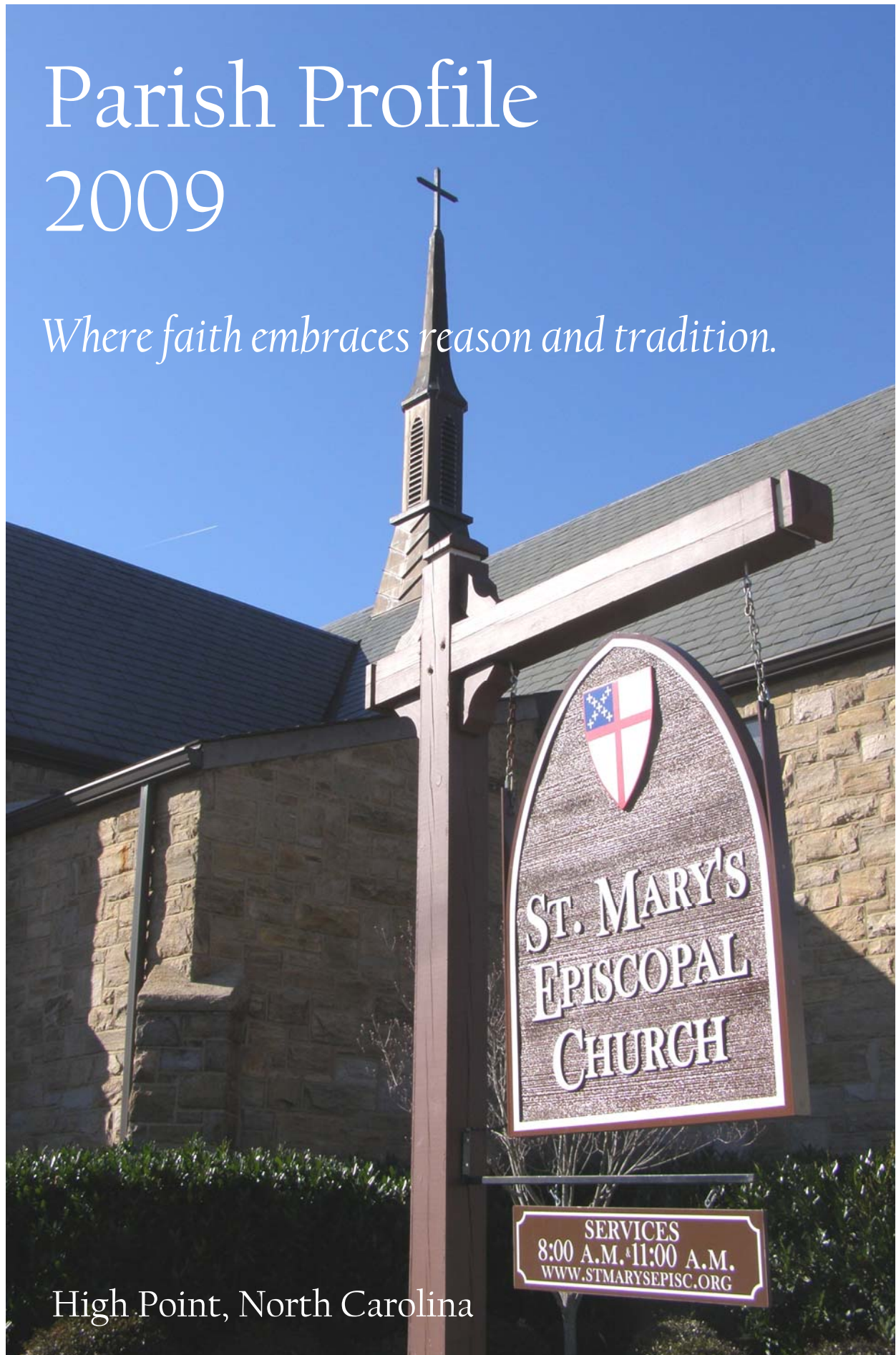


Parish Profile 2009

Where faith embraces reason and tradition.



High Point, North Carolina



Preface

Welcome to St. Mary's Episcopal Church in High Point, North Carolina. This Parish Profile provides a brief overview of our church including our past, our present, and our hopes for the future. In preparation for our search for a new rector, we have endeavored to discern what God wants St. Mary's to be and do by exploring our current strengths and weaknesses as a parish. In particular, we have solicited input from members of our congregation regarding many aspects of our parish life, and have prayerfully considered what our parishioners have shared regarding their likes and dislikes, their hopes and dreams, and the qualities, skills and talents they value most in a rector. Though it is impossible to describe or even highlight all facets of St. Mary's in this brief summary, we hope this Parish Profile presents an informative and honest portrait of our beloved church. We also hope that this information will be helpful to those seeking to understand what makes St. Mary's Episcopal Church a truly special and caring faith community and the wonderful and challenging opportunities we face together as a congregation.

Our Parish Statement

We the people of St. Mary's care for each other and care deeply how we live out our faith. We believe God values all people equally. We welcome, appreciate and respect diverse perspectives and opinions. Anchored in the tradition of the Episcopal Church, we grow through a continually evolving conversation regarding faith, God, and society. We welcome all, without reservation, into our Christian body to be part of a loving and sharing family.

Gifts We Seek in Our New Rector



We have prayerfully sought to discern those particular gifts which we believe are most important in our next rector. Ideally, we seek a priest who possesses the following gifts:

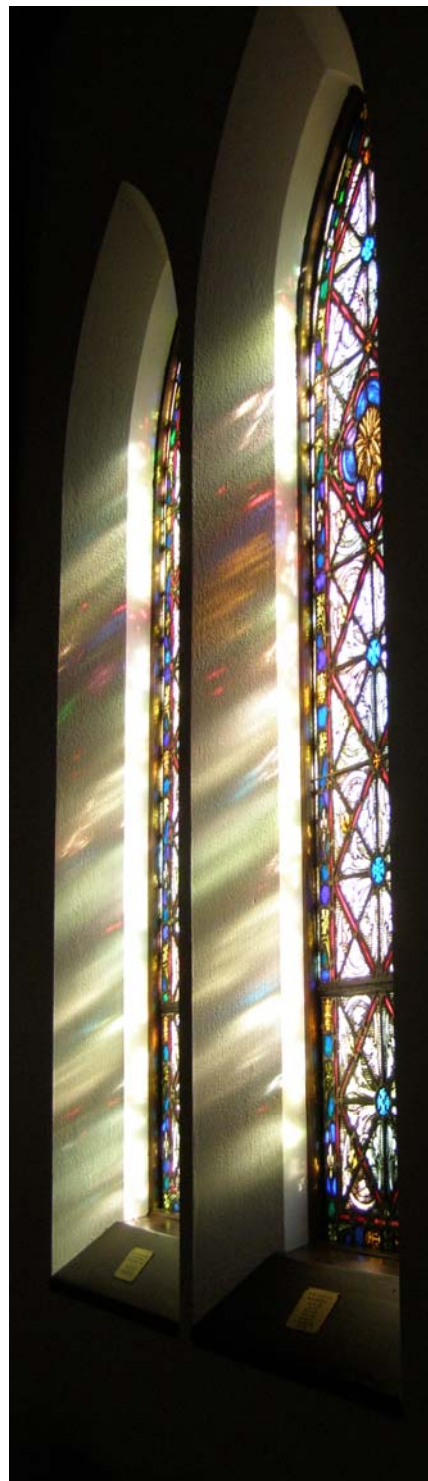
Preaching - We hope that our new Rector will be an excellent preacher. We hope that our new Rector will be skilled in preparing and presenting sermons that will encourage and challenge us, provide us with new insights about our faith, capture our attentions and our hearts, and will leave us with a greater sense of what God is calling us to do.

Pastoral Care - We hope that our new Rector will be skilled in pastoral care. When we or our loved ones are ill, distraught, or in trouble or need, we hope that our new Rector will be available and able to comfort and console us.

Evangelism - We hope that our new Rector will be skilled in helping us to grow and develop as a parish. In particular, we hope that our new Rector will be able to help us attract and retain new and younger members.

Administration - We hope that our new Rector will be a good administrator who can capably manage our staff and the day to day activities of our church, will be a good planner, communicator and delegator, and will have excellent interpersonal skills.

Spiritual Guidance - We hope that our new Rector will be gifted in guiding persons in matters of the spirit. We hope that our new Rector will be skilled in guiding those who have questions regarding their faith, who are seeking new insights into their faith, or who are in search of spiritual direction.



(continued on next page)

Gifts We Seek (cont'd)



Leadership - We hope that our new Rector will be a strong leader. In particular, we hope that our new Rector will be able to unite us as a faith community in these complex and challenging times, and to inspire us to move forward together to accomplish the goals that God sets before us.

Youth - We hope that our new Rector can relate to and communicate with young people. We also hope that our new Rector can inspire young people to be actively involved in our church and our youth programs.

Outreach - We hope that our new Rector will be active in our local community, will promote and support outreach programs, and can help us become more actively and closely involved with our Diocese.

Christian Formation - We hope that our new Rector will be skilled in facilitating the planning, promotion and implementation of a variety of Christian formation programs and activities for all ages.

Worship & Liturgics - We hope that our new Rector will be skilled in planning and leading worship services that are faithful to our Episcopal tradition and incorporate our wonderful music ministries.



Our Membership



St. Mary's currently comprises about 760 members, nearly all of whom are confirmed members in good standing and eligible to vote in parish elections. An average of about 200 persons attend our Sunday morning worship services, and an average of about 50 persons participate in Sunday Christian education classes. Most of our members live in High Point or other nearby communities.



Total membership and participation in worship services and Christian formation programs has remained substantially unchanged in recent years. Though we strive to embrace diversity and to be inclusive, our current members are predominately white and have average to above-average incomes. We recognize that our hope to grow as a parish requires that we must continue to work to attract and retain new members. With this objective in mind, St. Mary's will sponsor a Magnetic Church seminar in May 2009 for our parish and others within our community.

Our hope for the future: To increase the number and diversity of our members by embracing newcomers, being more intentional about attracting and keeping new members, by being more welcoming and more inclusive, and by more effectively communicating what St. Mary's has to offer to visitors and others within our community.

Our Worship



St. Mary's currently offers Sunday worship services at 8 am and 11 am (8 a.m. and 10 a.m. during summer months). We also offer an informal worship service at 9 a.m. on the second Sunday of each month. All Sunday services include the service of Holy Eucharist. We also offer a service of Holy Eucharist and healing at noon on Wednesdays.



St. Mary's has a long history of traditional worship that is faithful to the liturgical calendar, lectionary and the Book of Common Prayer. As a congregation, we generally prefer a dignified and reverent approach to worship, and our congregation values a well-prepared and eloquently presented sermon. We are accustomed to excellent music by our adult, children, and young adult choirs. Our music is enhanced by our talented organist and choirmaster and the wondrous tunes he coaxes from our marvelous pipe organ.

Though many in our congregation strongly prefer to continue our established patterns and style of worship, some parishioners have expressed a desire for at least some additional variety in our worship services. In particular, parishioners have expressed a desire for enhanced or expanded informal worship services.

Our hope for the future: To continue our tradition of worshiping God in a reverent and dignified manner; to provide a variety of worship services which are rooted in our Episcopal tradition, including enhanced and/or expanded Informal worship services; and to continue our tradition of incorporating excellent music as an integral part of our worship.

Christian Formation



St. Mary's currently offers a variety of Christian formation opportunities for our congregation on Sunday mornings. For our youngest members and visitors, we have a nursery and playroom staffed by loving caregivers. For children age 4 to fourth grade, we offer "Godly Play" classes which employ a wonderful curriculum based on the Montessori model of teaching. Our middle school and high school classes currently use a program called "Making It Real and Relevant" which engages young people in examining passages of the Bible.



We currently offer two classes for adults on Sunday mornings. Our Lectionary class explores the appointed lessons for each Sunday using the *Synthesis*, a weekly lectionary guide which provides background and other insightful information about the events described in the day's lessons. Our Kerygma Bible Study class follows the well-known *Kerygma* curriculum, which explores the Bible and how the Church interprets and understands the Bible's teachings. We also regularly offer special adult education opportunities, such as special Advent and Lenten programs.



Our Episcopal Youth Community (EYC) program brings young people together for the purposes of learning about God and each other, sharing, worshipping, spiritual formation, outreach and fun. In 2008, we hired a new Interim Coordinator of Youth Ministry. Our EYC and youth programs are supported by our Youth Endowment Fund. We recognize that our youth are important to the future of our parish, and we hope to provide a youth program that will spiritually enrich our young people and attract new persons to our church.

(continued on next page)

Christian Formation (cont'd)

We recognize that our Christian formation offerings can be improved and expanded in order to attract and involve more participants. To that end, we are currently organizing a Christian Formation Commission which will be charged with planning and coordinating enhanced Christian formation programs for all ages.



Our hope for the future: To increase participation in Christian formation classes and programs by providing a variety of meaningful Christian formation opportunities for all ages, including enhanced Christian formation classes and programs for adults; and to provide an attractive and spiritually enriching Christian formation program for our youth.

Our Outreach



St. Mary's has a long history of reaching out to help persons in need in our community and the world through volunteering, contributions, and by sharing our facilities, resources and talents with others. Some of our current outreach groups & recipients include:

Matthew 25:40
Carpenter House
Triad Health Project
Habitat for Humanity
Open Door Ministries
Family Literacy Project
Mobile Meals of High Point
Community Clinic of High Point
Thompson Child & Family Focus



Father's Table
Stephen Ministries
High Point Jail Ministry
Episcopal Church Women
Episcopal Aids Foundation
Brotherhood of St. Andrew
Narcotics Anonymous (NA)
Alcoholics Anonymous (AA)
Episcopal Relief & Development

In addition, St. Mary's hosts St. Mary's Music Academy, which serves our community by providing affordable music lessons to young people in voice, piano and strings. The Academy has sponsored a Music Discovery Camp each summer to introduce underprivileged children in our community to the joys of playing musical instruments.



St. Mary's hosts the Family Literacy Project. In cooperation with the Latino Family Center and Guilford Technical Community College, the project seeks to increase literacy among Hispanic adults and children in our local community.

(continued on next page)

Our Outreach (cont'd)



St Mary's has long sponsored a Boy Scout troop. We also make our facilities available to several non-profit organizations, including Alcoholics Anonymous (AA), Narcotics Anonymous (NA), and Toastmasters. Our ECW regularly collects clothing and other donations for at-risk children who are receiving care at Thompson Child & Family Focus near Charlotte, NC. Our chapter of the Brotherhood of St. Andrew sponsors several orphaned children in Uganda, and provides financial support to other youth-related organizations and activities.



Though our parish currently does much to help persons in need and to improve lives within our community, we recognize that we can do more. Accordingly, we need to make all parishioners aware of outreach opportunities, and must involve as many parishioners as possible in our outreach activities.

In recent years, St. Mary's has not been actively or extensively involved in the programs and activities of our Diocese. We recognize that we are members of the greater Episcopal Church, and we hope to establish a stronger and closer relationship with our Diocese.

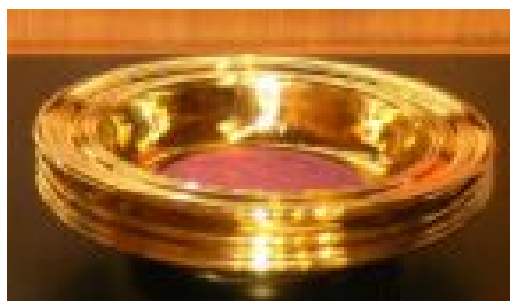
Our hope for the future. To continue our long tradition of helping and serving others in need in our community and in the world, to continually seek new opportunities for outreach, to actively seek to include as many parishioners as possible in outreach programs and activities, and to become more actively involved in the programs, activities and support of our Diocese.

Our Finances



St. Mary's is debt free, and has operated within budget or at a surplus for many years. St. Mary's presently has nearly \$1.6 million in endowment funds, including about \$500,000 in our Property Endowment Fund, about \$500,000 in our Youth Endowment Fund, and over \$300,000 in our General Endowment fund. In 2004, St. Mary's established the Order of the Oak to encourage members to consider making one-time or periodic gifts or bequests to St. Mary's in addition to their annual pledges. Our 2009 total operating budget is about \$600,000. About 73% of our total income is from current pledges, about 16% from other contributions, and about 11% from investment income from our endowment funds. About 200 individuals and families pledge to our church each year. Our budgeted 2009 expenditures are distributed as follows:

Outreach	12%
Salaries & Benefits	52%
Operating Expenses	13%
Worship	1%
Maint. & Repairs	12%
Other Expenses	4%
Rector Search & Relocation	6%



We currently have about \$2.4 million in our Building Fund, and our members have pledged over \$5 million toward our \$6 million goal. We plan to use these funds to construct a new multi-use building on our vacant property and to replace our existing Administration & Education Building.

Total annual pledges to St. Mary's have remained substantially unchanged in recent years, and we recognize that we must increase membership, increase participation in planned giving, increase individual member giving, and prudently manage future expenditures if we are to maintain or expand our current ministries and programs.

Our hope for the future: To increase our annual operating budget by growing the number of pledging members and increasing our emphasis on stewardship in order to adequately support the ministries and needs of our Parish; to faithfully and responsibly manage the use of God's gifts in challenging economic times.

Our Lay Ministries



Our laity is the lifeblood of our church, and we are blessed with a number of faithful parishioners who graciously give of their time, energy and talents to support the ministries of our parish. Our lay ministry groups and activities include:

Senior & Junior Altar Guilds
Acolytes
Lay Eucharistic Ministers
Lay Readers
Adult, Children & Young Adult Choirs
Stephen Ministry
Ushers
Wardens & Vestry Members
Parish Connections Volunteers
Christian Education Teachers
Church Committee Members
Greeters (Welcoming Committee)
Helping Hands Volunteers
EYC Volunteers
Brotherhood of St. Andrew
Episcopal Church Women (ECW)



We are blessed with a devoted and hard-working Vestry. Many of our ministries are coordinated by committees of laypersons, with oversight by our Vestry and clergy.

Currently, a core group of devoted people do a large portion of the work in our parish. In the future, we hope to include more and different laypersons in our committees and in the ministries of our church.

Our hope for the future: To continue to involve lay persons in all aspects of the ministries of our church, to better communicate opportunities for lay ministry to all members of our congregation, and to actively involve as many persons as possible in our lay ministries.

Our Parish Life



St. Mary's is a family of devoted and caring people. We worship together, help each other in times of need, and enjoy getting together for fun and fellowship. We understand that we often find Christ in and through each other, and that our faith is strengthened by our time together.



We offer several opportunities for members of our parish family to come together for fun and fellowship. Our largest gathering is our annual Parish Family Picnic. Food for the event includes barbeque prepared by the Brotherhood of St. Andrew, and wonderful potluck dishes by parishioners. In recent years, our Parish Picnic has been held on our vacant property across from the church. Our popular Christmas Party for adults is held annually in the home of one of our gracious parishioners. The Brotherhood of St. Andrew's annual "Lobsterfest" fundraiser is always a delicious and fun event. Our ECW hosts a biannual spring Gala which features a silent auction fund-raiser and wine tasting. Various intergenerational events are offered at the church throughout the year.



Coffee Connections is an informal gathering following our 11 am Sunday worship services. Coffee and refreshments are provided by various church groups on a rotating basis. Coffee Connections provides an opportunity for us to socialize together on a weekly basis and to meet and welcome visitors. Our Table Fellowships are informal groups of 8-12 members who meet monthly in a member's home to share a meal and get to know each other. Our Helping Hands Committee helps parishioners celebrate births and other occasions and provides meals and comfort during illness or bereavement.

Our Parish Life (cont'd)



Our ECW includes several active chapters, and provides numerous opportunities for our church women to socialize and work together. Our Brotherhood of St. Andrew chapter is one of the oldest in the country, and regularly comes together for fund-raising activities and fellowship for men. Our EYC provides an opportunity for youth to strengthen their faith while also having fun together.

We strive to be an open, welcoming and inclusive community of believers, but we realize that we can and should do more. We understand that if our parish family is to grow, we must make all visitors and newcomers feel welcomed, loved, included and involved.

Our hope for the future: To continue to love and help one another as Christ has taught us, to offer a variety of opportunities for fellowship for all members, to continually seek new opportunities for fellowship, and to actively seek out and embrace new persons as members of our parish family.

Our Staff & Organization



The St. Mary's staff includes a team of capable and committed persons who work to meet the daily demands of our parish and to support our many ministries. Current clergy and staff members include:



Interim Rector
The Rev. Dr. Bob Cook



Deacon
The Rev. Evelyn Morales



Organist-Choirmaster
Dr. Harold Andrews



Youth Choir Director
Margaret McDonald



**Christian Ed. & Family
Ministry Coordinator**
Duana Cisney



**Interim Coord. Of
Youth Ministry**
Scott Willis



Financial Secretary
Rosemary Inman



Administrative Asst.
Shannon Watts



Sexton
Artes Ross

The Interim Rector and Administrative Assistant serve full-time, and all other staff positions are part-time.

St. Mary's has traditionally been served by both a full-time Rector and an Assistant Rector. Our long-time Rector retired in April 2008, and our previous Assistant Rector accepted a call from another parish in September 2008. Once our new Rector is called, our goal is to also call a full or part-time Assistant Rector.

Our hope for the future: To maintain a capable and helpful staff that serves the needs of our parish and is commensurate with the size and budget of our church.

Our Facilities



St. Mary's is centrally located within the city of High Point at the corner of Main Street and Farris Avenue. Our property borders the beautiful and historic Emerywood neighborhood. St. Mary's is located within High Point's Core City, a central area of the city recently designated for focused development, redevelopment and revitalization.



Our buildings include our Sanctuary, Parish Hall, and Education Building. Our Sanctuary was constructed in 1928, and is a beautiful cruciform-shaped stone structure having a high pitched slate roof crowned with a majestic copper steeple. Our sanctuary can comfortably seat about 300 persons. Our Tudor-style Parish Hall adjoins the Sanctuary, and includes a large and well-equipped kitchen. A choir room, class rooms and offices are located on the second floor, and a large basement provides extra space and a large meeting area for our Boy Scout troop and other groups.

Our Education Building was constructed in 1961, and is faithful to the modern aesthetics of that period. The building includes offices for our clergy and staff, two large meeting rooms, and numerous classrooms. The building also houses our Children's Chapel and nursery. Our Memorial Garden and Columbarium are located between the two main buildings. A fenced playground is located on the opposite side of the Education Building, and a parking area is provided behind the building.

In 2004, St. Mary's acquired a small house located on property that is adjacent to our parking lot behind the church. The so-called "little house" currently needs some renovation and maintenance. Young persons in our EYC have recently been working to make the house more useful as a meeting place for our youth and other programs and ministries.

(continued on next page)

Our Facilities (cont'd)



In 2005, a large block of vacant land diagonally across from our campus was generously donated to St. Mary's. Plans and a capital campaign for constructing a new multi-use building on the donated land and for replacing our existing Education Building began in 2006. Our Land Development Committee is presently having detailed plans developed for the new buildings. We will carefully and prayerfully consider the impact these new facilities will have on our future operating budgets before undertaking construction.

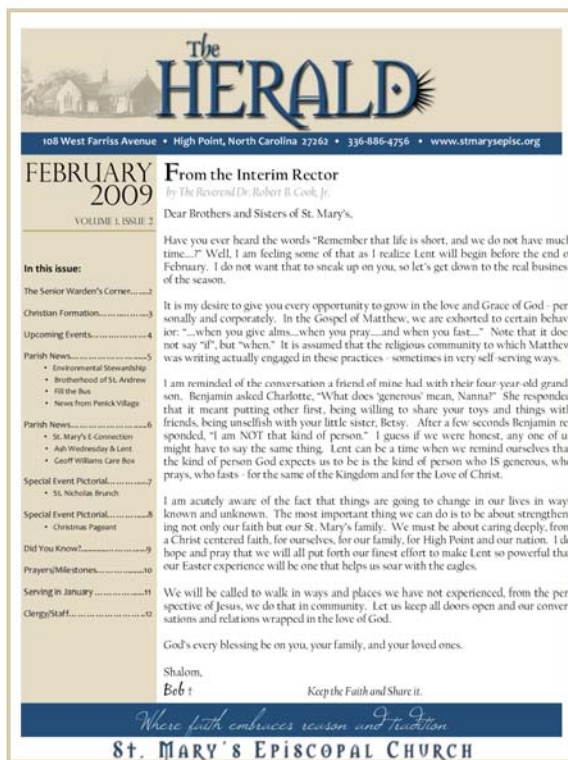
Overall, our facilities have been well maintained and are in excellent condition, and are substantially adequate for most of our present needs. We recognize, however, that additional space will be required if we are to grow as a parish, and that some of our facilities can be improved to better facilitate our ministries.

Our hope for the future: To responsibly improve and expand our facilities commensurate with our financial resources in order to better support our ministries, better serve the needs of our congregation and our community, and to provide room to grow for our parish and faith community.

Our Communication



We communicate information to our congregation in a number of ways. Our church website includes a wealth of information about church ministries and activities, including a master calendar for all major church events. *The Herald* is our monthly newsletter, and typically includes letters from our Rector and Senior Warden, announcements, schedules, notices and other information. *St. Mary's E-Connection* is our weekly electronic newsletter which includes current information and notices, and is distributed each week to members of our congregation having electronic mail service.



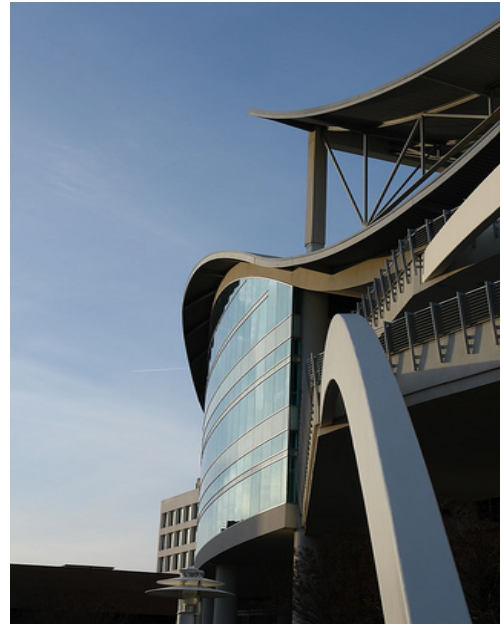
Though we make many efforts to communicate important and timely information to all of our parishioners, we recognize that we can do better. In particular, we recognize that we can do a better job of informing parishioners about opportunities for persons who may desire to become more involved in the ministries and outreach of St. Mary's. We also recognize that we can do a better job of keeping our members informed regarding current church financial information.

Our hope for the future: To actively, openly and effectively communicate timely information regarding all aspects of our parish life to all members of our parish family, including church financial information and opportunities for lay ministry and outreach.

Our Community



High Point is located in the Piedmont region of north central North Carolina, and was named after the "highest point" on the North Carolina Railroad between Goldsboro and Charlotte. The city has an estimated population of over 100,000, making it the eighth-largest municipality in North Carolina. High Point and nearby Greensboro and Winston-Salem combine to form the Piedmont Triad. The Triad's 1.6 million residents make it the thirty-seventh largest metro area in the nation. High Point is strategically and conveniently located at the midpoint between Charlotte and Raleigh, Washington, D. C. and Atlanta, and New York and Miami.



High Point is home to many of the world's leading furniture companies, and is well known as the "Furniture Capital of the World." High Point also is known as "North Carolina's International City" due to the semi-annual High Point Furniture Market, which attracts tens of thousands of furniture exhibitors and buyers from around the world. Recently, biotech, pharmaceutical, distribution and warehousing businesses have made High Point home. The region boasts business and industrial parks like Piedmont Centre, Piedmont Corporate Park, and Premier Center. High Point Regional Health System is a state-of-the-art medical facility located just blocks from the church.

High Point's public schools are part of the Guilford County Schools system, and include High Point Central, Andrews, and Southwest High Schools. The city also has a number of excellent private schools. Rapidly expanding High Point University is a coeducational liberal arts university associated with The United Methodist Church. *(continued on next page)*



Our Community (cont'd)



High Point includes several parks, museums and theaters, and is home to the nationally recognized North Carolina Shakespeare Festival.



Additional information about High Point and the surrounding area can be found at the following websites:

[City of High Point](http://www.high-point.net) - www.high-point.net

[High Point Convention & Visitors Bureau](http://www.highpoint.org) - www.highpoint.org

[High Point Chamber of Commerce](http://www.highpointchamber.org) - www.highpointchamber.org

[High Point Economic Development Corp.](http://www.highpointedc.com) - www.highpointedc.com

[Guilford County Schools](http://www.guilford.k12.nc.us) - www.guilford.k12.nc.us

[High Point University](http://www.highpoint.edu) - www.highpoint.edu

Our History



In 1882, the small town of High Point, North Carolina was thirty years old, comprised a mere 2,000 souls, and had no Episcopal church. In May of that year, fifteen Anglicans met with Bishop Lyman to organize St. James' Mission. Within a few years, this small group of believers began a campaign to construct an Episcopal Church building in High Point. On July 25, 1890, a cornerstone was laid near the corner of College and Washington Streets, and construction of a small brick church was completed that year. The sanctuary could seat 124 persons, and triple arched stained glass windows illuminated the altar. With a new home, the young mission changed its name to St. Mary's.

St. Mary's was admitted into union with the convention of the Diocese in 1906. 35 persons signed the consent to be governed. In 1912, the church was consecrated with 44 communicants. The mostly female congregation worshiped in the original church building for 37 years - sometimes as a mission, and sometimes as a parish - but always few in number and hard pressed for funds.

Talk about a new building began in 1923. St. Mary's purchased our current property in 1925, constructed a parish house on the site in 1927, and completed a new church building in 1928. The cornerstone of the original church building was incorporated into the vestibule wall of the new sanctuary, and is still visible today. Through the Great Depression that followed, the viability and future of St. Mary's became uncertain. After much sacrifice, the church eventually paid off its debt in 1945, the mortgage was ceremoniously burned, and the newly debt-free church was dedicated by Bishop Penick.

In 1961, a separate Education Building was constructed on the church grounds. In 1966, St. Mary's organized St. Christopher's Mission, and 200 of our baptized members departed to begin a new congregation. Also in 1966, the vestry approved burying the cremains of our departed saints on the church grounds. A columbarium was added in 1978. *(continued on next page)*



Our History (cont'd)



Following the twenty-seven year tenure of the Rev. William Price, the Rev. Dr. Glenn Busch was called as the new rector of St. Mary's in 1981. A large block of vacant land diagonally adjacent to the church was donated to St. Mary's in 2005. Plans and a capital campaign for construction of a new building on the donated land and replacement of our Education building began in 2006. In April 2008, after 27 years of faithful service, Glenn Busch retired as only the eighth rector in our long history. The Rev. Bob Cook accepted our call to serve as Interim Rector beginning September, 2008.



Our hope for the future: To continue our long and faithful tradition of worship and service, to be a welcoming and caring community of people from all walks of life which faithfully provides a unique pattern of worship, music, lay ministry, pastoral care, fellowship, Christian formation, outreach, and youth programs, and to continue to grow together and support one another in our shared life in Christ.



St. Mary's Episcopal Church

108 W. Farriss Avenue

High Point, NC 27262

(336) 886-4756

www.stmarysepisc.org